

# ENVIRONMENT & COMMUNITY AWARD ENTRANTS 2024

**MIMICO**  
EQUIPPING YOUR SUCCESS

**aga**  
THE AGGREGATE & QUARRY  
ASSOCIATION OF NZ



# Fulton Hogan – Nova Trust 1 ha growing area

---

Positive outcomes for the local community are at the heart of this social enterprise initiative.

## *Canterbury Quarries*

Fulton Hogan Quarries sponsored and built an irrigated laydown and growing area used for the Nova Trust. This initiative works alongside their recovery programs to prepare service users for life beyond treatment by developing life skills.



# Fulton Hogan – Nova Trust 1 ha growing area

This model has been further extended to include Fulton Hogan supplying native plantings to the West Coast Ngāi Tahu iwi to assist with their land regeneration projects.





# Ravensdown – Geraldine lime rock art restoration project

Protecting the rock art and restore habitat has both biodiversity and cultural value.

## *Geraldine Lime, Kakahu*

Engaging with iwi on appropriate protection for the rock art and the site generally. They also created access and information signage to raise awareness with visitors to the site.





# Ravensdown – Geraldine lime rock art restoration project

Establishing a wetland by planting native species in the area to improve water quality and flow.

Supplying larger, eco-sourced tree species to reflect the indigenous ecology of the area, particularly the huge tōtara forests that were logged by settlers in the past.







# Road Metals Rolleston Quarry Solar PV System

Embracing renewable energy solutions and enhancing sustainability efforts.

*Rolleston Quarry, Christchurch*

On a section of rehabilitated land formerly used for quarrying, this initiative breathed new life into an otherwise dormant area of the quarry, maximising land use while minimising environmental impact.



# Road Metals - Rolleston Quarry Solar PV System

In collaboration with the local solar company, Platinum Energy, Road Metals embarked on a journey to implement a solar photovoltaic (PV) system tailored to the site's unique requirements.





# Ravensdown – Dipton Lime Decarbonisation Project

Ravensdown's responsibility to stop its reliance on fossil fuels and meet its commitments to science-aligned emissions reduction targets.

## *Dipton Lime, Castle Downs*

Ravensdown converted its agricultural lime processing from coal to woodchip by installing a biomass combustor.





# Ravensdown – Dipton Lime Decarbonisation Project

The site now operates without coal, saving 1,100 tonnes of carbon dioxide equivalent per annum. This reduction is equivalent to taking 460 cars off the road and has resulted in a 10% decrease in Ravensdown's carbon footprint.



**ravensdown** 





# Winstone Aggregates – The Dotterel Band

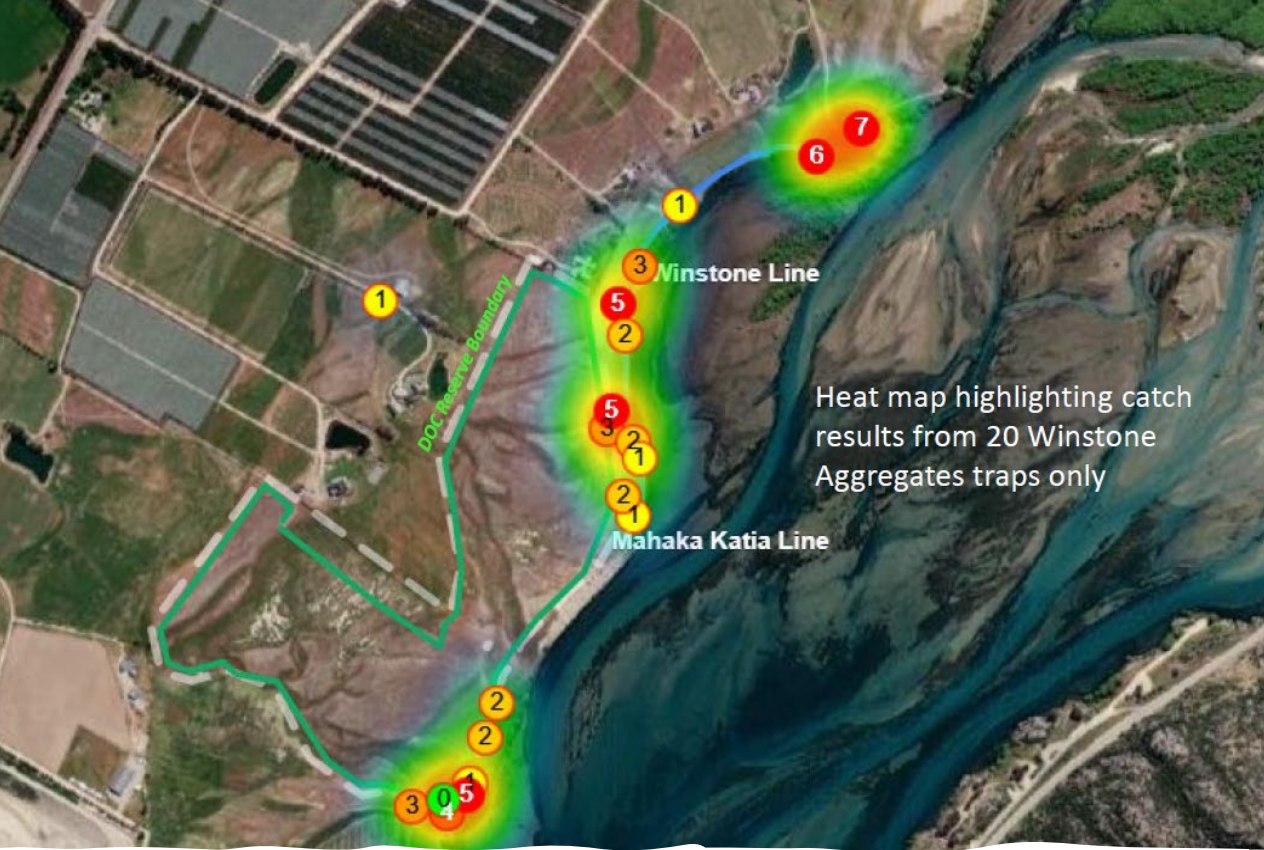
Noting Winstone Aggregate's strong commitment to environmental sustainability a neighborhood group approached them for assistance.

## *Amisfield Quarry, Mount Pisa*

A neighbourhood group began a trapping programme aimed at restoration of the declining populations of banded dotterels and black-fronted terns, which nest in the Mahaka Katai Reserve.







## Winstone Aggregates – The Dotterel Band

This involved the purchase of 10 live cat traps with nodes to alert when a trap is triggered, enabling quick dispatch and resetting, as well as 10x DOC 250 traps to allow for a higher density trap layout around the reserve.





# Ravensdown – Geraldine Lime Decarbonisation Project

An innovative approach to eliminating the practice of burning coal to dry aglime without needing a substitute fuel.

*Geraldine Lime, Kakahu*

The construction of a large drying shed has enabled Ravensdown to dry aglime without burning coal.

The greenhouse gas emissions savings are well over 700 tCO<sub>2</sub>e/year, representing 6% of Ravensdown's total carbon footprint.





# Ravensdown – Geraldine Lime Decarbonisation Project

The fuel and emissions savings also extend to electricity and diesel as conveyors are not in operation and the plant is not started up on most days.

Product quality improvements have been achieved as the resulting product is less dusty and can be safely loaded onto a truck without the need for days or weeks of drying.



# Winstone Aggregates – Positive Biodiversity Strategy

**Collaborating with Nature Positive to develop a strategy aligned with the International Union for Conservation of Nature (IUCN) and adopting the Biodiversity Indicator and Reporting System (BIRS).**

*Northland, Auckland, Waikato, and Wellington*

Despite planting a greater number of hectares compared to those removed across Winstone sites, the ecological benefits of the previous system have not been fully restored. To address this deficit, they have been assessing suitable offset sites to carry out voluntary pest control, aiming to restore forest health and the wider ecosystem.



# Winstone Aggregates – Positive Biodiversity Strategy

---

To engage the staff and introduce the positive biodiversity project, Winstone hosted a “vote for your iconic species” activity where four candidates were selected.

While competition was close, the yellow crowned kakariki took out the first spot and will now be the face of the strategy.





# Rotomara Holdings Ltd – Leach Kiwipoint Quarry

Contacting local contractors, demolition companies, readymix concrete suppliers and asphalt plants to advise the recycling of waste materials to aggregates.

## *Leach Kiwipoint Quarry, Wellington*

Kiwipoint began accepting demolition concrete, surplus overrun readymix, sludge from concrete plant and asphalt from manufacturing waste and road reconstruction.

Careful separation and preparation of the concrete and asphalt, to make specification GAP aggregates, drainage products and builders mix.





## Rotomara Holdings Ltd – Leach Kiwipoint Quarry

---

Good quality recycled product has led to steady growth, for the year to 31 March 2024, 136,000 tons of material has been received with 114,000 tons of recrete products sold, thereby diverted from landfill.

For every tonne of concrete diverted, 11kg of carbon is sequestered.



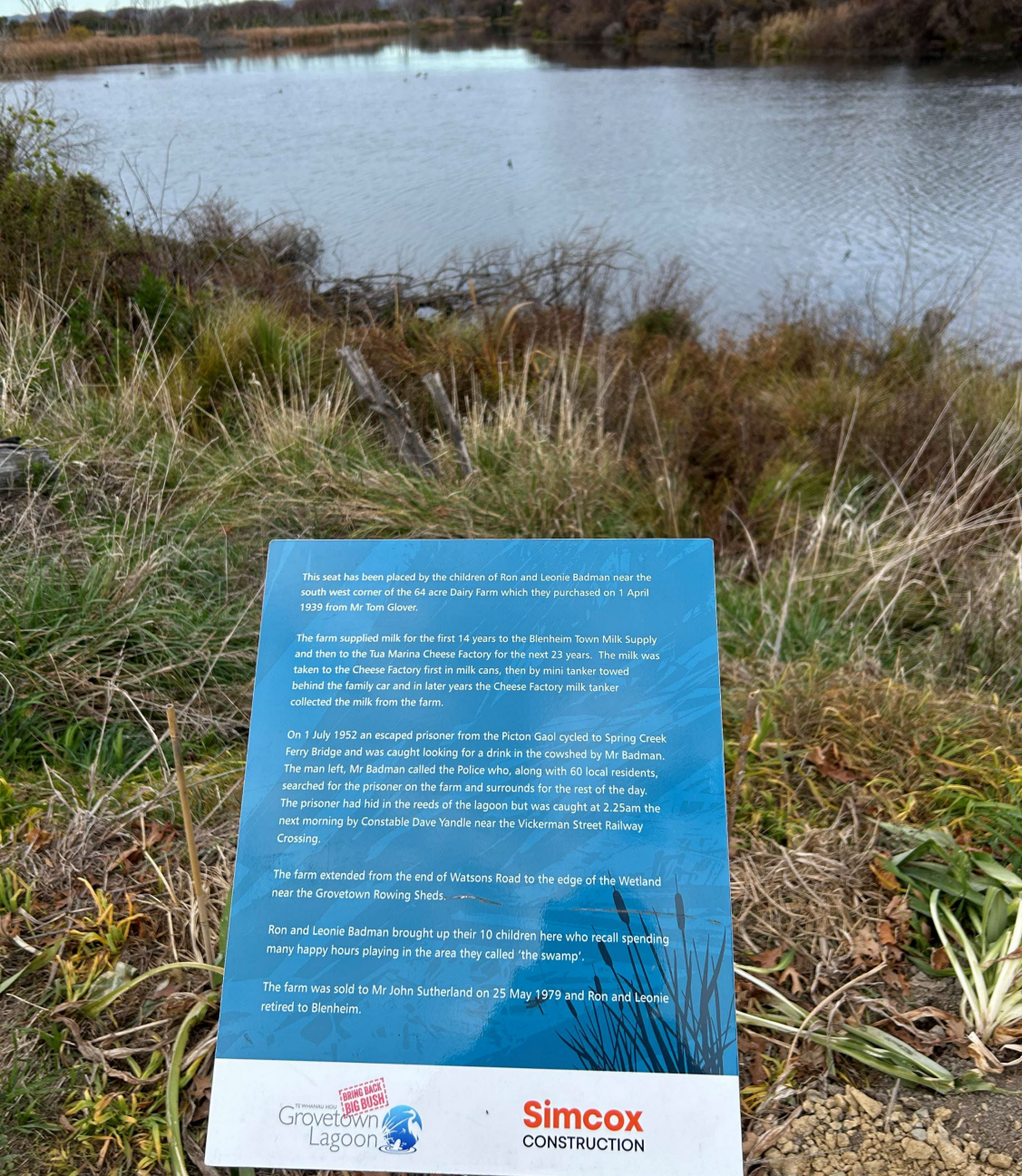


# Simcox Construction – Grovetown Lagoon restoration

**Partnering with the Te Whanau Hou – Grovetown Lagoon, a natural wetland in Marlborough for a restoration project.**

***Simcox Construction part of Isaac Construction Ltd, Blenheim***

Working on a restoration project including building walking tracks, constructing structures and sponsorship for planting and revegetation of native plantings. Assisting with the study, protection and breeding of native flora and fauna.





# Simcox Construction – Grovetown Lagoon restoration

Grovetown Lagoon is one of just a few natural wetlands remaining on the Wairau Plain.

The Grovetown Lagoon Project presents positive environmental change, with enhanced ecology, improved water quality and landscape.





# Horokiwi Quarries

Horokiwi Quarries installed a filter press which is reducing environmental effects

## *Horokiwi Quarries – Wellington*

The installation has reduced diesel usage by 100 liters per day and water consumption by 150 cubic meters per day (60%). This has reduced chemical usage (floc reduced by 80%) and has resulted in one less truck on our roads.



# Horokiwi Quarries

The installation of the filter press has been a great tool operationally for the quarry, but they never thought that the environment benefits would be as large as they are.

“With better technology it shows that you can grow your business with less impacts on the environment and operate safer.”

MIMICO Environment & Community Award 2024

