

Te Ahu a Turanga

QUARRY NZ - PROJECT UPDATE

15th July 2022

WHY

To create a **safe, resilient** and **efficient**
replacement for the closed State
Highway 3 through the
Manawatū Gorge

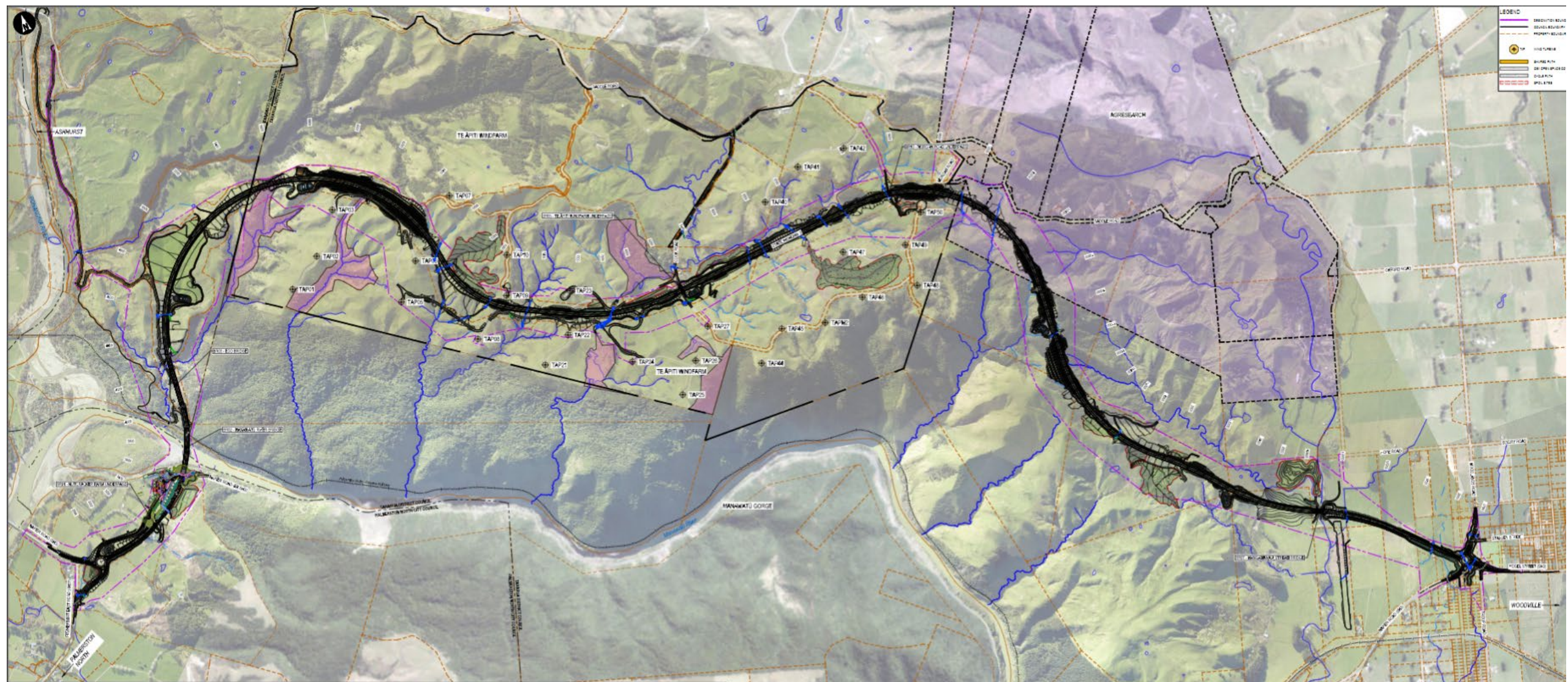
Our Alliance



Project Summary



11.5km long - Four Lane Divided Highway
6 Bridges in total
6 Million Cubic Metres of Earth to Move
2 Million plus shrubs and trees to plant
11.5km long Shared-Use Path
5,000 plus people involved over the project lifecycle
500 thousand tonnes of Pavements Aggregate to supply & place
30 thousand tonnes Asphaltic Concrete to lay



Te Ahu a Turanga Manawatū Tararua Highway

Flyover

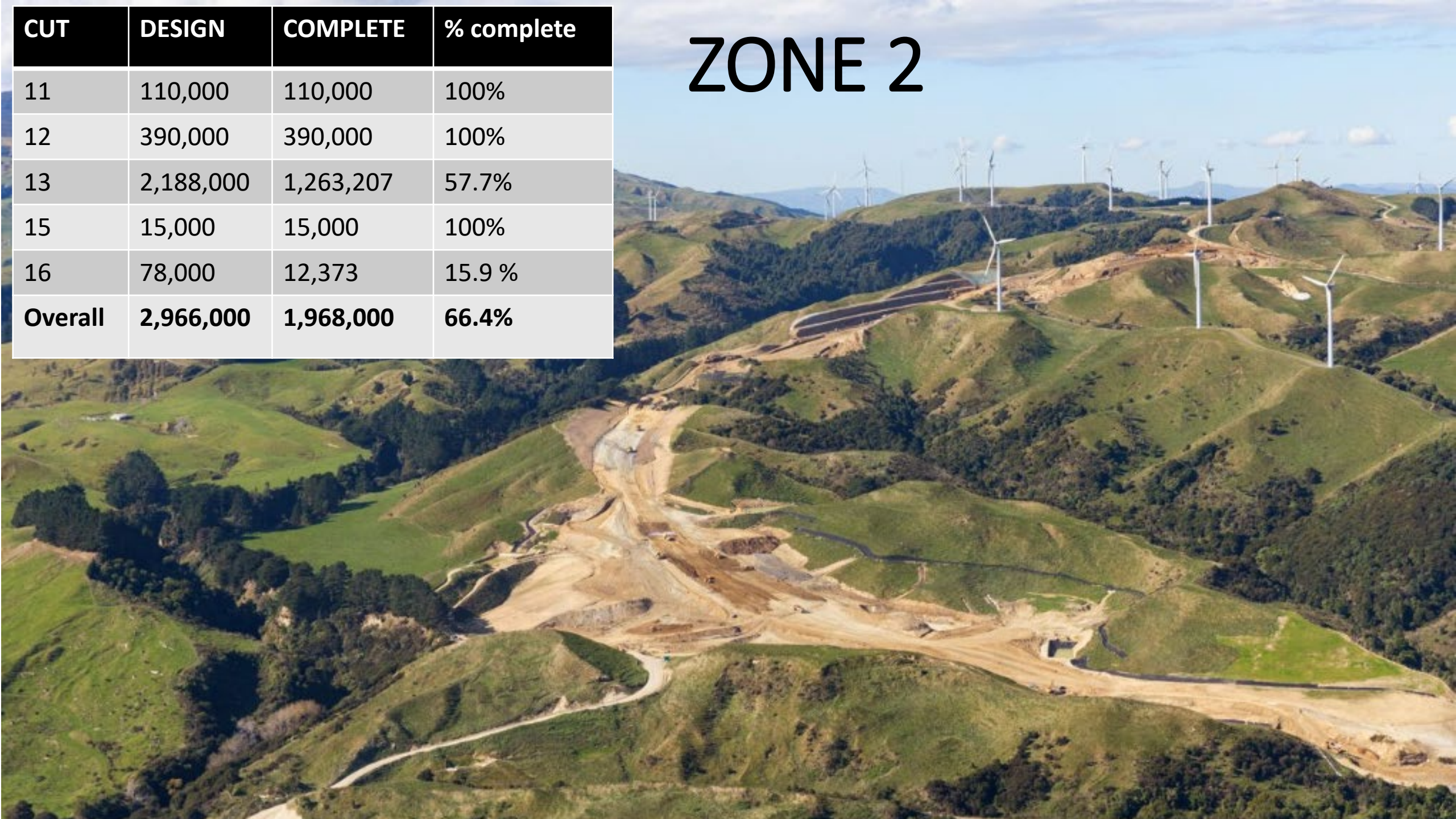
20 April 2022

Flown under CAA

Part 102 Regulations

CUT	DESIGN	COMPLETE	% complete
11	110,000	110,000	100%
12	390,000	390,000	100%
13	2,188,000	1,263,207	57.7%
15	15,000	15,000	100%
16	78,000	12,373	15.9 %
Overall	2,966,000	1,968,000	66.4%

ZONE 2





- Batter Erosion – Cut 13
- Deep voids opening up in cut 13 finished batter
- Vertical Drainage system installed
- Monitoring through winter and working through further design solutions





ZONE 4

CUT	DESIGN	COMPLETE	% complete
28	1.3M	535k	42%
26	41k	0k	0%
27	10k	7K	70%
30	350k	350k	100%
	1.8M	892k	49.5%





Structures Update



Bridge 02 – Parahaki Bridge



UC SAN DIEGO
CALTRANS SRMD
TEST FACILITY

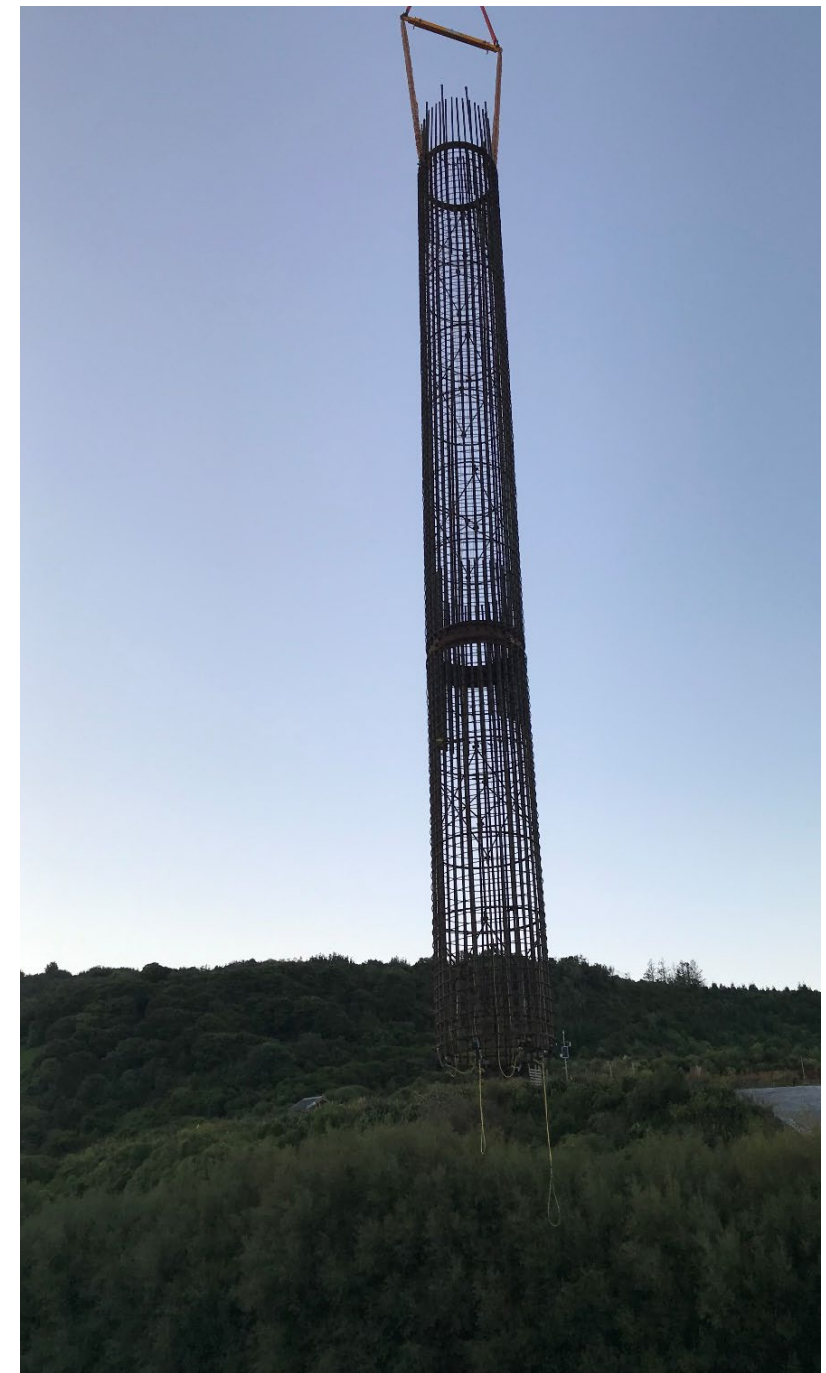
DIS
MAHAWATU

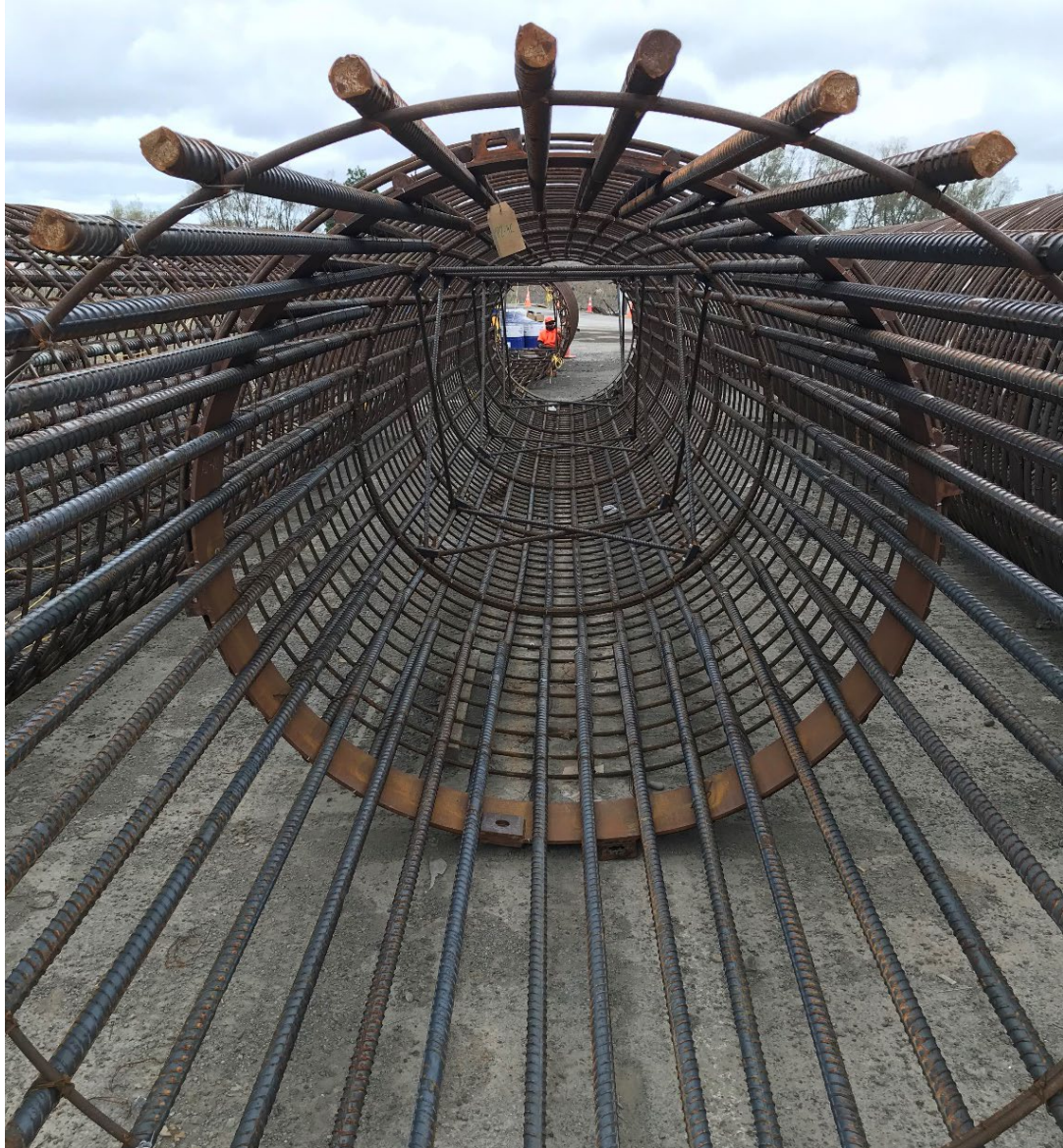
TYPE LRB 8
BRG NO 26748
TEST NO 15B 13-1
9 SEP 2021



Build a bridge to make a bridge

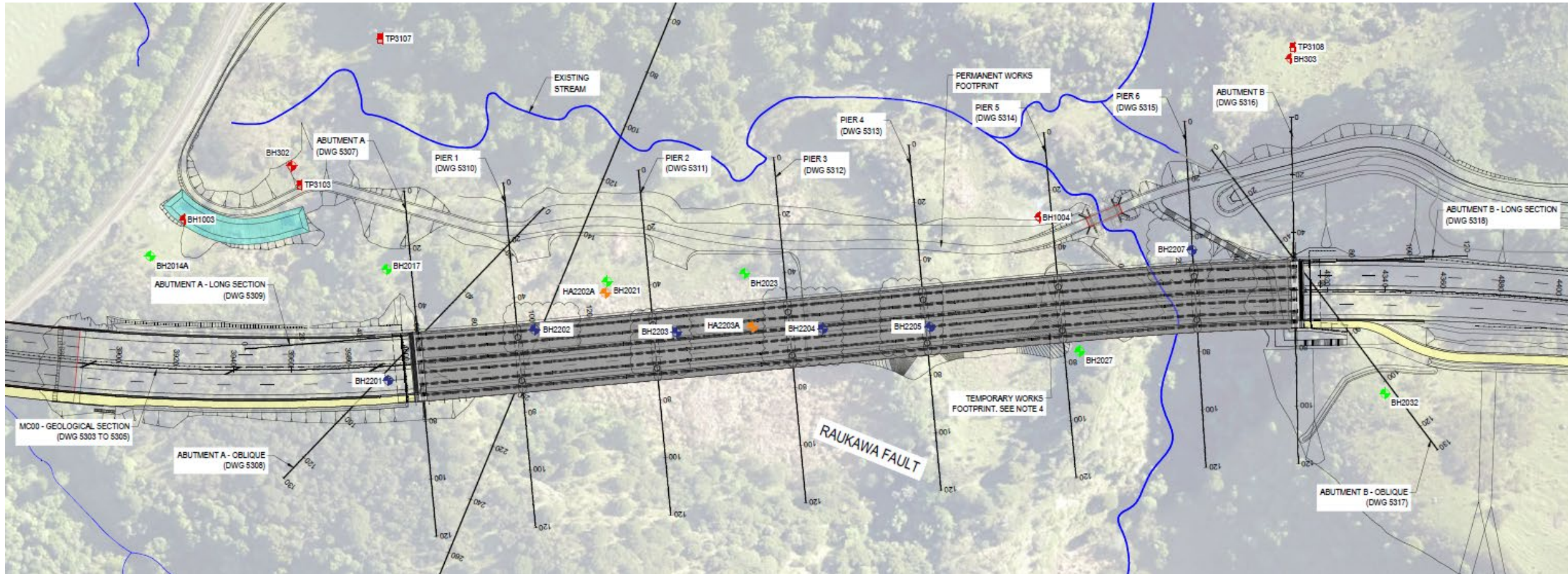






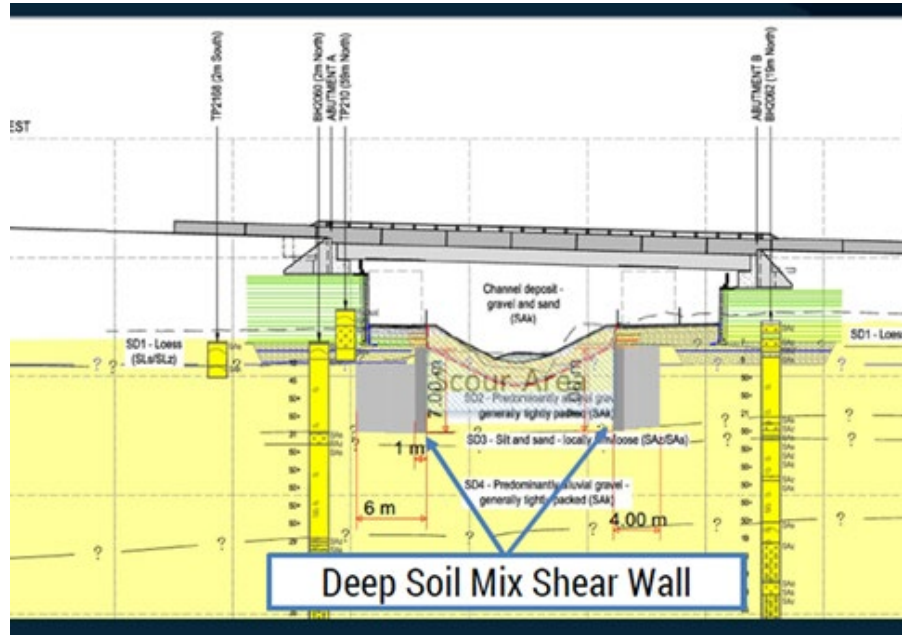


BR03 – Eco-Viaduct





BR03 - Eco Viaduct



BR01, 05 & 10 - Other Structures



Questions

